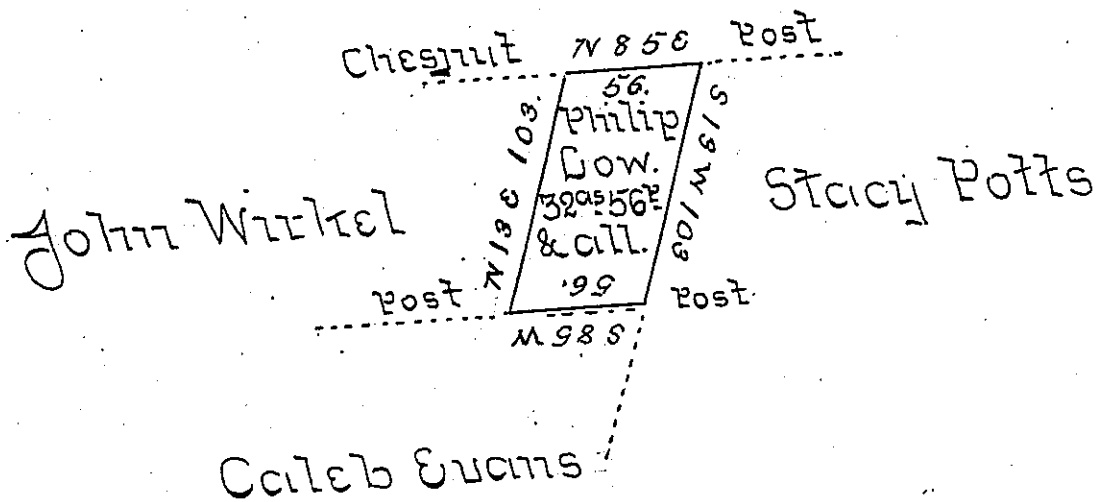


Margdalens Beber



Surveyed the above described tract of land for Philip Low on the 23<sup>d</sup> day of Dec<sup>r</sup> 1814 in pursuance of his Warrant dated the 17<sup>th</sup> of Nov<sup>r</sup> 1814 Situate in Moreland Township Lycoming County and bounded as above. Containing Thirty two acres Fifty six perches & Allowance of Six Feet &c

Wm Wilson D.S.

To Rich<sup>d</sup> M. Beech Esq<sup>r</sup>  
 Surveyor General

*IN TESTIMONY* that the above is a copy of the original remaining on file in the Department of Internal Affairs of Pennsylvania, made conformably to an Act of Assembly approved the 16th day of February, 1833, I have hereunto set my Hand and caused the Seal of said Department to be affixed at Harrisburg, this Eleventh day of October 1905.

*Loach P. Sawyer*  
 Secretary of Internal Affairs.